

MATCHING GIFTS:

My employer has a matching gifts program: Y / N

Employer Name: _____

Title/Position: _____

Payment Information:

Cash Check # _____

Please make checks payable to "FCC-BSA", Memo FS24.

Credit Card: MC Visa Discover AMEX

Card # _____

Billing Name: _____

Expiration Date: _____ CVV: _____

Signature: _____

Please pay in full by December 1st.

Monthly payment amounts may change to meet this due date.

Does your company have a matching gift program? You can double your support to Scouting by simply filling out the necessary forms from your Human Resources Department.

The French Creek Council is a 501(c)(3) nonprofit organization. Your donations are fully tax-deductible to the extent allowable by law.

www.frenchcreek-bsa.org



French Creek Council, BSA

1815 Robison Rd. West | Erie, PA 16509

Tel: 814.868.5571 | Fax: 814.868.7514

www.frenchcreek-bsa.org | www.BeAScout.org

SCOUTING'S IMPACT

Nowhere in the country is the Scouting program stronger than right here in the French Creek Council. Our Scouts are leaders with a built-in set of core values, a trained sense of how to achieve objectives with the resilience to persevere and overcome obstacles. We are proud to say there are thousands of Scouts making a positive impact in the Northwestern Pennsylvania, including 5 counties in Pennsylvania and 1 township in Ohio.

OUR EXPERIENCES



The Scouting experience is designed to give kids and young adults the skills they need to unlock their full potential. Our programs, from Cub Scouts to Exploring, offer all a safe place to learn, grow and explore a new world of adventure.

OUR CAMP

Summer camp is Scouting in action, and there's no better place to explore the outdoors than right here in our council. Our premier camp is among the best summer destinations in the country.



OUR MISSION



Scouting is critical to ensure that youth are put on a path to a successful life. Our mission is to prepare our young people to make ethical choices over their lifetimes by instilling in them the values of the Scout Oath and Scout Law.

SCOUTING A PATH TO SUCCESS



Scouts are **TWICE** more likely to earn a bachelor's degree.



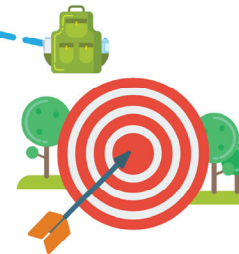
Scouts are **TWICE** more likely to earn an advanced degree.

Scouts are more likely to have higher credit scores.



Scouts are more likely to earn almost **DOUBLE** as an adult.

Scouts are more likely to advance and improve their socio-economic status.



BOY SCOUTS OF AMERICA
FRENCH CREEK COUNCIL

Prepared. For Life.®



BE PREPARED.
MORE THAN A MOTTO.

Being prepared means being ready for any challenge.

Our scouts put into action the skills that prepare them **for life.**



BOY SCOUTS OF AMERICA
FRENCH CREEK COUNCIL

BE PREPARED. MORE THAN A MOTTO.

No organization delivers adventure and values like Scouting. It's the heart of what we do. And right here in the French Creek Council, our Scouts are learning more than just how to tie a knot and collect badges. We are preparing our Scouts to lead effectively, manage conflict, become role models and set goals for their future.

Since 1910, Scouting has helped mold the future leaders of this country by combining educational activities and lifelong values with fun. Through more than a century of experience, we know that helping youth succeed puts us on a path toward a more conscientious, responsible, and productive society.

Our Scouts are learning the building blocks of leadership from the moment they join.

Eagle Scouts are **76%** more likely to be community leaders.

**Baylor University Study: "Merit Beyond the Badge"*



WHAT WE DO. FUNDAMENTALS OF SCOUTING

LEADERSHIP DEVELOPMENT

Scouting is where leaders learn to lead. From running corporations to walking on the moon, the accomplishments of Scouting alumni have shaped our country. Leadership is taught at every level of Scouting from Cub Scouts all the way to Eagle.

EXPERIENTIAL LEARNING

Scouting's advancement program develops resilience by providing a series of surmountable obstacles and the steps to overcome them. Scouts progress at their own pace as they meet each challenge and explore new opportunities.

CAREER EXPLORATION

Scouting inspires youth to explore their futures and opens a new and exciting world around them. Scouting puts youth on the path to a successful career by introducing them to purpose packed adventures.

COMMUNITY IMPACT

For more than one-hundred years, Scouting has led the charge to make our communities better places to live through giving back and instilling values. Scouting's impact transcends national origin, race, gender, political affiliation and time.

By joining our Friends of Scouting, you help pay for volunteer and staff training, insurance coverage, support staff, camps, equipment, recognitions for leaders, administrative needs, AV supplies, a council website, scholarships, and so much more.

But most of all, your gift will help ensure that every young person who wants to experience the Scouting program has the opportunity. You already know how important that can be; you've seen the benefit Scouting can have on a family, on a community, and on an individual. And it all begins with you. To get started, please fill out the pledge card on the next page or go to www.frenchcreek-bsa.org and become one of our Friends of Scouting.



I WANT TO HELP SCOUTING BUILD FUTURE LEADERS!

TODAY'S DATE: _____ NEW ADDRESS? Y / N _____

About you: (please print)

*Full Name (Adult): _____

*Billing Address: _____

*City/State/Zip: _____

Phone: _____

Email: _____

District: _____

Unit (circle one) Pack Troop Team Crew Ship Post Number: ____

*Required fields

MAKE A ONE-TIME GIFT:

- \$100: Scout Me In
- \$365: Support A Scout
- \$500: Leadership Member
- \$1,000: Benefactor Member
- I pledge \$_____ in support of Scouting

Bill My Pledge (Min. \$25):

- Monthly (through December)
- 2 Installments
- 4 Installments
- One Time

Please flip over for payment options.